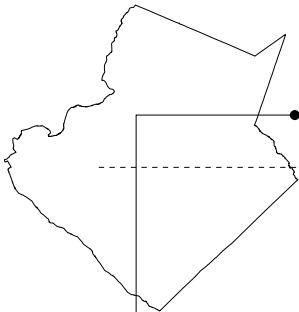


gwinnettcounty

• special purpose local
option sales tax program
2001



GEORGIA



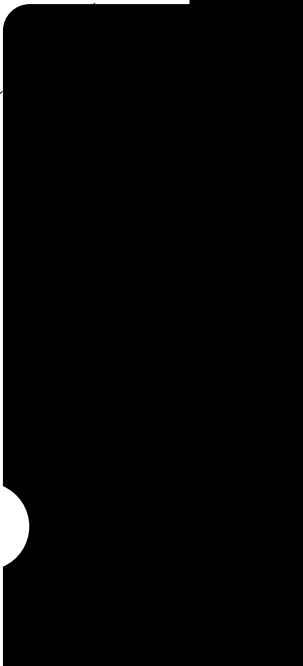
• **2001 SPLOST**

- Public Safety: Police, Fire, and Georgia Department of Motor Vehicle Safety
- Parks and Recreation
- Libraries
- Transportation
- Contingencies and Administration

** This document reflects 2001 SPLOST program status as of June 2004.
Additional projects were added after the publication of this document.*



- public safety: police, fire, and georgia department of motor vehicle safety



2001 SPECIAL PURPOSE LOCAL OPTION SALES TAX (SPLOST)

project

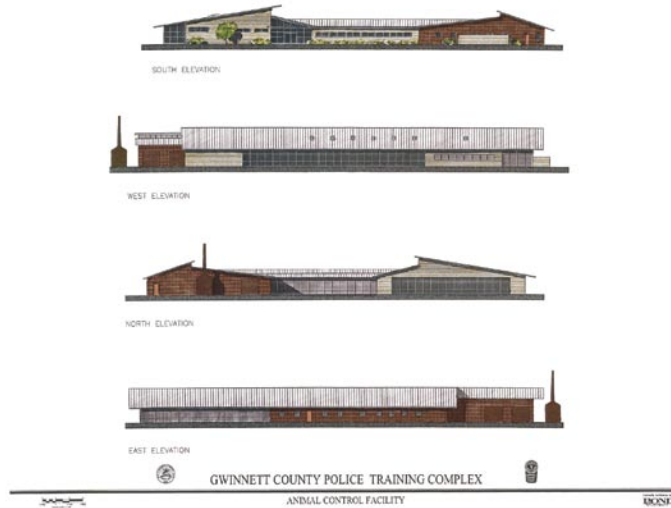
Animal Control Facility

description

New Animal Control facility to include 31,000-sq.-ft. facility, 1,200-sq.-ft. barn, and pasture area.

SPLOST funding

\$225,000



project

Eastside Precinct 7 (Dacula/Hog Mountain Area)

description

Project is purchase of an approximately five-acre site in the Dacula/Highway 316 area and development of an 11,500-sq.-ft. police precinct with approximately 100 parking spaces.

SPLOST funding

\$3,555,000



*Property for
Eastside Precinct 7*

2001 SPECIAL PURPOSE LOCAL OPTION SALES TAX (SPLOST)

project

Police Training Center

description

The project is the development of a comprehensive law enforcement training facility inclusive of site purchase and design and construction of a 25,000-sq.-ft. or larger training/classroom building, 34-lane indoor firing range (50 meters) with expansion capability, 10-lane indoor/outdoor firing range (100 meters) also with expansion capability and a multi-acre precision driving course.

SPLOST funding

\$20,000,000



2001 SPECIAL PURPOSE LOCAL OPTION SALES TAX (SPLOST)

project

Ambulance Replacement

description

Replacement vehicle schedule for Gwinnett County ambulances. The 2004 schedule is to replace two ambulances with excess mileage with two new medium duty ambulances.

SPLOST funding

\$957,000



project

Ambulance Service Expansion

description

Expansion of the Gwinnett County Ambulance Service and number of ambulance units needed to provide an adequate emergency medical service to the citizens of Gwinnett County. The 2004 schedule is to bring the County's total to 18 on duty ambulances.

SPLOST funding

\$225,000



2001 SPECIAL PURPOSE LOCAL OPTION SALES TAX (SPLOST)

project

Fire Apparatus Program

description

Fire Apparatus Scheduled Vehicle Replacement Program. The 2004 Replacement Program consists of replacing two front line pumpers and one reserve pumper.

SPLOST funding

\$3,538,000



project

Fire Station I Relocation

description

Facility is to be an 8,800-sq.-ft., two-bay fire station similar to Fire Stations 6 and 23 replacing the current fire station in the same general Norcross area with improved conditions and accessibility.

SPLOST funding

\$3,750,000



Fire Station I will be relocated

2001 SPECIAL PURPOSE LOCAL OPTION SALES TAX (SPLOST)

project

Fire Station 7 Relocation

description

Facility is to be a 8,800-sq.-ft., two-bay fire station similar to Fire Stations 6 and 23 replacing the current fire station in the same general Duluth area with improved conditions and accessibility.

SPLOST funding

\$3,750,000



Fire Station 7 will be relocated

project

Fire Station 12 Relocation

description

Facility is to be a 12,000-sq.-ft., three-bay fire station similar to Fire Stations 11 and 5 replacing the current fire station in the same general Snellville area with improved conditions and accessibility.

SPLOST funding

\$3,750,000



Fire Station 12 will be relocated

2001 SPECIAL PURPOSE LOCAL OPTION SALES TAX (SPLOST)

project

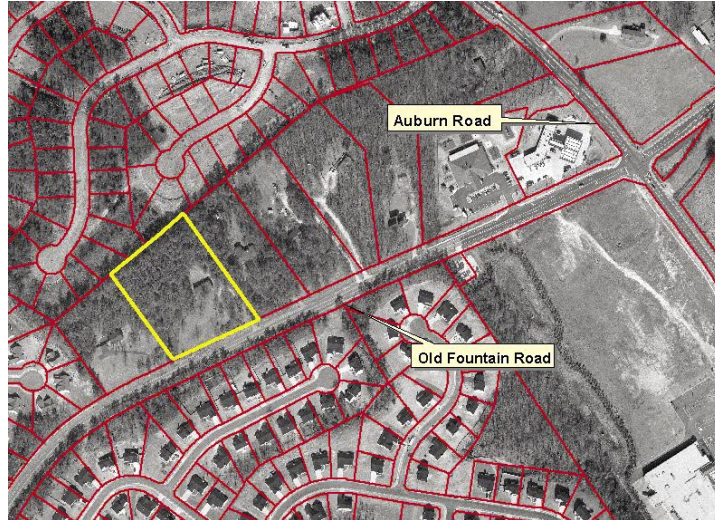
Fire Station 27 (Hwy. 324/Dacula Area)

description

A new two-bay fire station in the eastern Hog Mountain vicinity. The facility would be 8,800 sq. ft. and similar to Fire Stations 6 and 23. The project includes the addition of a new engine company and fire apparatus.

SPLOST funding

\$3,750,000



Site of future Fire Station 27

project

Fire Station 28 (Rosebud/Loganville Area)

description

A new two-bay fire station in the eastern Snellville/Rosebud vicinity. The facility would be 8,800 sq. ft. and similar to Fire Stations 6 and 23. The project includes the addition of a new engine company and fire apparatus.

SPLOST funding

\$3,750,000



2001 SPECIAL PURPOSE LOCAL OPTION SALES TAX (SPLOST)

project

Fire Station 29

description

A new three-bay fire station in north Lawrenceville along the Highway 316 corridor. The facility would be 12,000 sq. ft. and similar to Fire Stations 5 and 11. The project includes the addition of a new engine company and fire apparatus.

SPLOST funding

\$3,750,000



Site of future Fire Station 29

2001 SPECIAL PURPOSE LOCAL OPTION SALES TAX (SPLOST)

project

Georgia Department of Motor Vehicles Customer Service Center

description

The project is the design and construction of a new Georgia Department of Motor Vehicles Customer Service Center to replace the existing facility on Swanson Drive. The new facility will be built on County-owned property at Hurricane Shoals Road next to the new Fire Administration and Supply Facility. The Customer Service Center will be approximately 11,475 sq. ft., have 200 parking spaces, and a 52,500-sq.-ft. driving course.

SPLOST funding

\$3,000,000





• parks and recreation

2001 SPECIAL PURPOSE LOCAL OPTION SALES TAX (SPLOST)

project

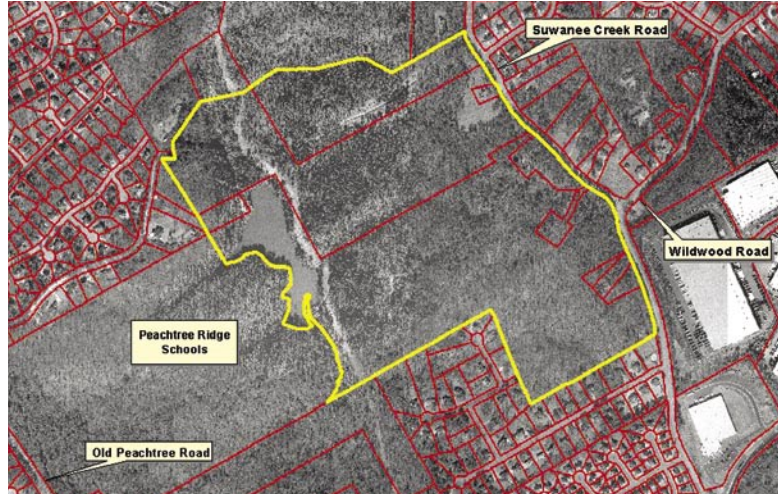
Active Parks Land Acquisition

description

Land purchases to accomplish goals of the 2001 Capital Revision to the 1996 Parks & Recreation Master Plan. Four new Community Parks: Sugarloaf, North Snellville, Harbins, and South District. Existing park expansions: Collins Hill, Rhodes Jordan, Dacula, Lenora Park, and Shorty Howell Park.

SPLOST funding

\$24,885,000



*Site of future
Peachtree Ridge Park*

project

Bay Creek Park (Phase I)

description

Facilities include an eight-field baseball-softball complex with one of the fields fully accessible and with a concession-restroom building, a football field with a concession rest-room building, trails, sewer pump station and other utilities, and parking.

SPLOST funding

6,981,000



2001 SPECIAL PURPOSE LOCAL OPTION SALES TAX (SPLOST)

project

Bogan Park Renovations

description

Community Center improvements to include the addition of a gymnasium, locker rooms, class and office space. Additionally, the aquatic center will have an expansion to the lobby and the addition of a “wet” classroom.

SPLOST funding

\$2,800,000



project

Cities Share /Contributions

description

Contribution to Gwinnett County cities for acquisition or construction of Park and Recreation active or passive facilities. Distribution to be determined by the Gwinnett Municipal Association. Cities are Auburn, Berkeley Lake, Braselton, Buford, Dacula, Duluth, Grayson, Lawrenceville, Lilburn, Loganville, Norcross, Snellville, Sugar Hill, Suwanee.

SPLOST funding

\$10,000,000



*City of Suwanee's
Town Center Park*

2001 SPECIAL PURPOSE LOCAL OPTION SALES TAX (SPLOST)

project

Collins Hill Park Improvements

description

Improvements to include additional parking, tennis court relocation, and a separate stand-alone maintenance compound. Other park improvements will be trail improvements, hardscaping of the viewing areas around the ballfields, and stormwater upgrades.

SPLOST funding

\$1,300,000



project

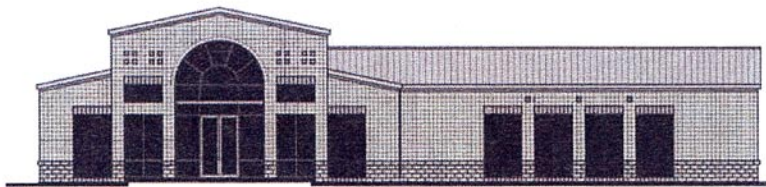
Dacula Park Activity Center

description

Construction of an activity building and associated parking on new land that was acquired next to the existing park. Tie the construction of the building into the pedestrian trail system. If funds allow, construct additional picnic and playground area, tennis and basketball courts.

SPLOST funding

\$3,118,000



2001 SPECIAL PURPOSE LOCAL OPTION SALES TAX (SPLOST)

project

George Pierce Park (Phase II)

description

Construction of two youth baseball/softball fields and concession/restroom building, community center, and outdoor basketball and tennis courts (as site allows). Other park construction may include trail construction, parking enhancements, and other items identified in the master plan.

SPLOST funding

\$5,950,000



project

Greenways Development

description

Two pilot projects have been identified. One will connect Tribble Mill with the new properties at Harbins: Alcovy and Palm Creek. This will involve land acquisition along a portion of the corridor of the Alcovy River. The other pilot is the Ivy Creek greenway and will involve connection within the F. Wayne Hill Water Resources Center to both the Mall of Georgia and George Pierce Park. This will also connect with Suwanee's Richard Trice Trail.

SPLOST funding

\$2,900,000



2001 SPECIAL PURPOSE LOCAL OPTION SALES TAX (SPLOST)

project

Hog Mountain Park Development

description

Phase I development of Hog Mountain Community Park includes a sports field complex with associated support building(s) and parking. Other park development may include trails, playgrounds, picnic pavilions, and other items that would be identified in a master plan.

SPLOST funding

\$4,500,000



*Site of future
Duncan Creek Park*

project

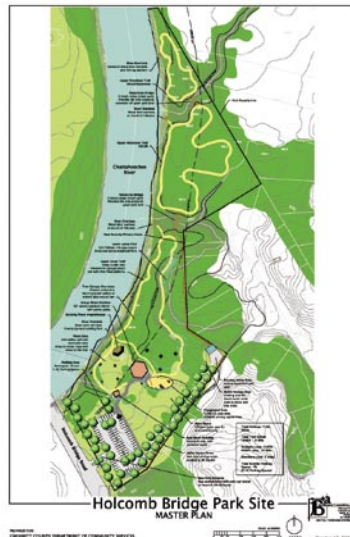
Holcomb Bridge Park

description

Demolition of Pinckneyville Arts Center and construction of passive park elements such as trails, a playground, restroom, and pavilion.

SPLOST funding

\$590,000



2001 SPECIAL PURPOSE LOCAL OPTION SALES TAX (SPLOST)

project

Jones Bridge Park Shoreline Stabilization (Phase II)

description

Stabilize/limit erosion of river bank, reforestation and revegetation of the bank, and construct elements to control and direct access to the bank and river.

SPLOST funding

\$900,000



project

Tribble Mill Park

description

Tribble Mill playground equipment and installation, surfacing and drainage installation for a destination playground at Tribble Mill Park.

SPLOST funding

\$200,000



2001 SPECIAL PURPOSE LOCAL OPTION SALES TAX (SPLOST)

project

Lenora Park Expansion

description

Lenora Park, with the addition of land to the original park, will be expanded according to the master site plan. The identified projects include: stand-alone football field, miscellaneous renovations to existing facilities, and an outdoor aquatic center. Other park improvements include trail expansion, lakeshore improvements, a dog park, athletic field lighting upgrade, entrance improvements including signalization, utilities, and parking associated with the various facilities.

SPLOST funding

\$6,789,000



project

Mountain Park Aquatic Center and Activity Building

description

Development of new Aquatics Center (indoor and outdoor pool) and Activity Building to replace the pool facility at Mountain Park. Facility may include passive elements (trail, landscaping, etc.).

SPLOST funding

\$9,200,569



2001 SPECIAL PURPOSE LOCAL OPTION SALES TAX (SPLOST)

project

Park Maintenance Facilities

description

Addition of stand-alone maintenance compound to existing parks at Bay Creek and Lucky Shoals.

SPLOST funding

\$430,536



Maintenance facility at Bay Creek Park

project

Passive Community Park Development

description

The first phase of a passive community park is to be developed in the Rockbridge area (Graves Property).

SPLOST funding

\$1,878,759



Graves Park

2001 SPECIAL PURPOSE LOCAL OPTION SALES TAX (SPLOST)

project

Passive Parks Land Acquisition

description

Land acquisition of passive parks in various areas of the county to preserve open space for future residents.

SPLOST funding

\$55,000,000



Little Mulberry Park

project

Rhodes Jordan Park Expansion

description

Football concession/restroom building, parking, and new pressbox/storage facility.

SPLOST funding

\$410,516



2001 SPECIAL PURPOSE LOCAL OPTION SALES TAX (SPLOST)

project

McDaniel Farm Park Development

description

The first phase of development will include the preservation/renovation of all of the existing buildings recommended in the master plan except the main residence. Additionally, there will be multipurpose and nature trails with associated bridges, interpretive signage, restroom building, parking, and a maintenance building.

SPLOST funding

\$2,571,000



project

Five Forks at Ronald Reagan: Passive Community Park Development

description

The county's first passive community park. This park includes the construction of a multipurpose trail, a pavilion playground area with restroom, a senior activity area with a small pavilion, two bocce ball courts, two horseshoe courts and two shuffleboard courts, a teen area with a street skateboard feature, two half-court basketball courts, a small pavilion, and a dog park.

SPLOST funding

\$1,846,233



2001 SPECIAL PURPOSE LOCAL OPTION SALES TAX (SPLOST)

project

Yellow River Park Development

description

The first phase of construction will consist of multipurpose, nature, equestrian mountain biking trails, signage, parking, two restrooms buildings, changing station and washing area for mountain bikers, pavilion(s), playground, and maintenance building.

SPLOST funding

\$2,562,027



project

DeShong Park

description

The first phase of a passive community park located in the southwestern section of Gwinnett County.

SPLOST funding

\$1,886,102



2001 SPECIAL PURPOSE LOCAL OPTION SALES TAX (SPLOST)

project

Kanoheda Area Park

description

The first phase of a passive community park located in the Kanoheda Area.

SPLOST funding

\$1,896,416



project

Settles Bridge Master Plan

description

Master Planning for the Settles Bridge property. To be done cooperatively with the National Park Service and Georgia Department of Natural Resources.

SPLOST funding

\$60,000



2001 SPECIAL PURPOSE LOCAL OPTION SALES TAX (SPLOST)

project

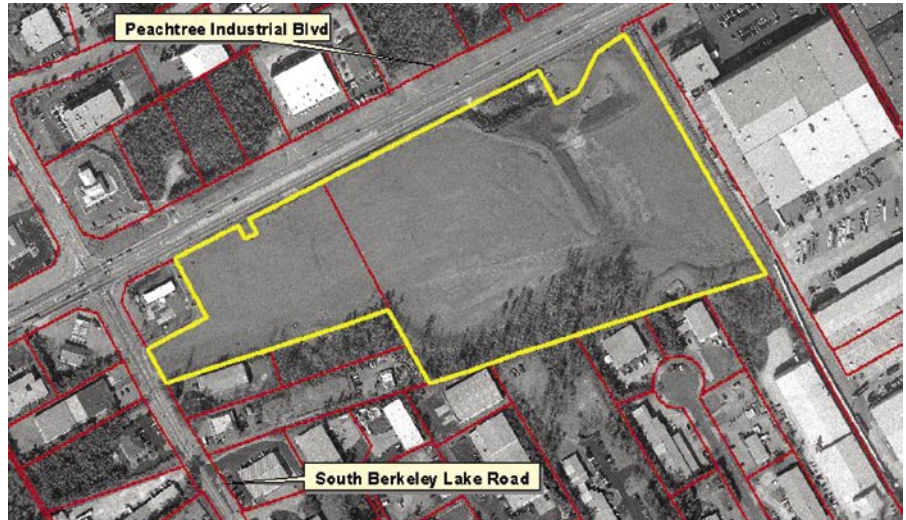
PIB Aquatic Center Master Plan

description

Completion of a master plan and soil testing for the Peachtree Industrial Boulevard Aquatic Center park site.

SPLOST funding

\$75,000



*Site of future
PIB Aquatic Center*

project

Spriggs Road Park Site Master Plan

description

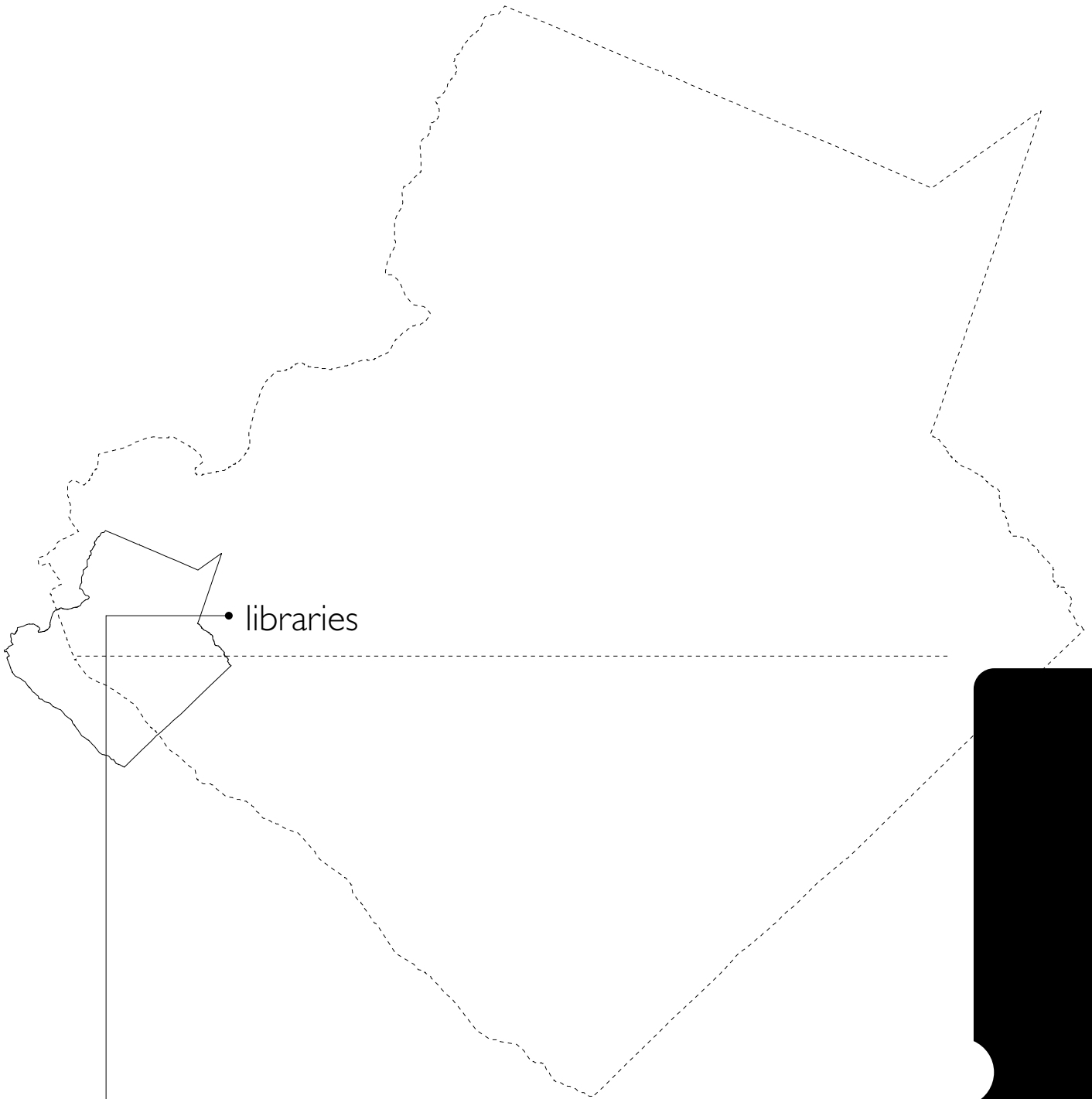
Completion of a master plan for the Spriggs Road park site.

SPLOST funding

\$40,000



*Site of future
Spriggs Road Park*



• libraries

2001 SPECIAL PURPOSE LOCAL OPTION SALES TAX (SPLOST)

project
description
SPLOST funding

Suwanee Branch Library
Development of a 20,000-sq.-ft. library with equipment, furnishings, and materials.
\$5,471,000



project
description
SPLOST funding

Dacula Branch Library
Development of a 20,000-sq.-ft. library with equipment, furnishings, and materials.
\$5,471,000



*Site of future
Dacula Branch Library*

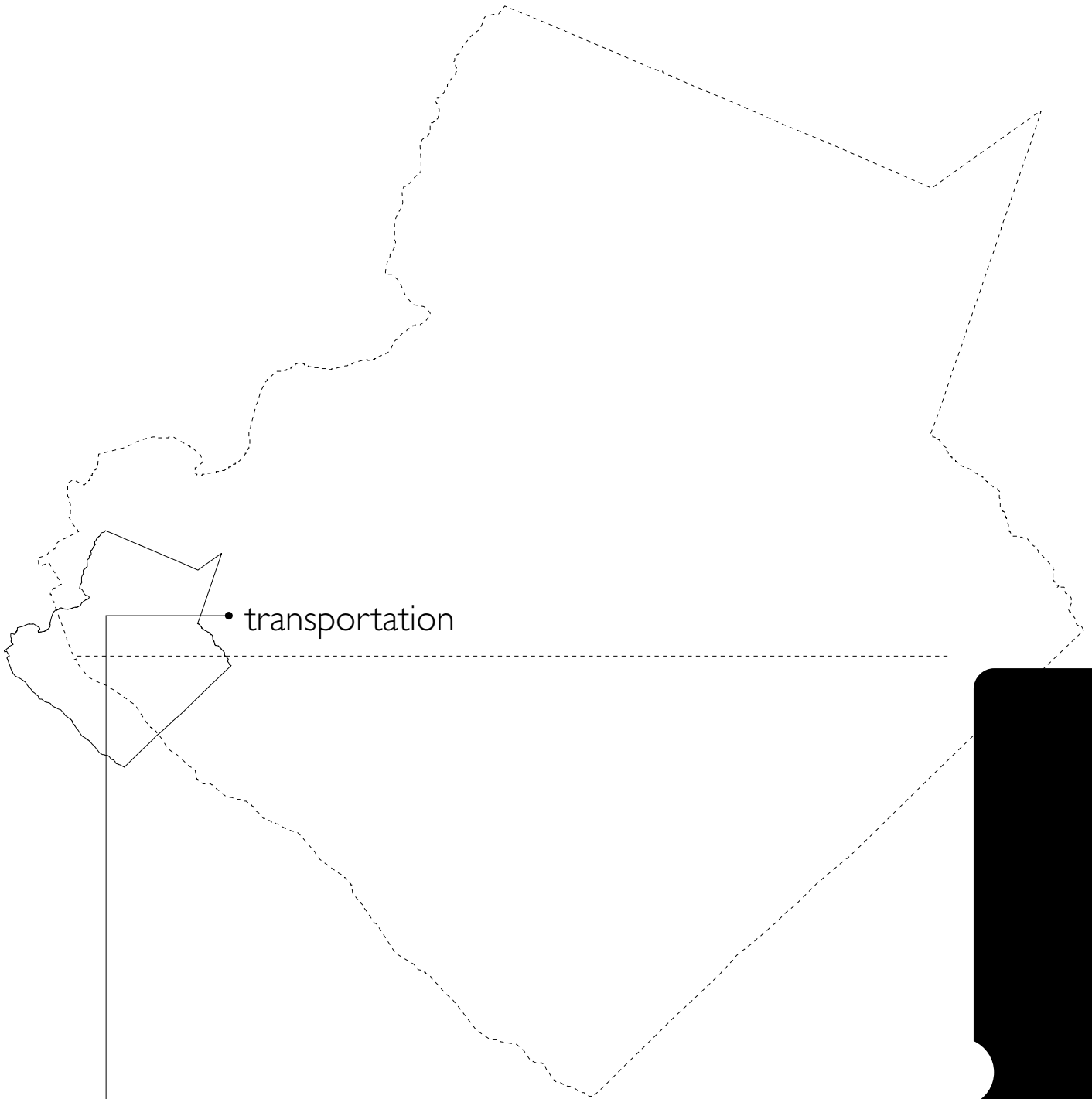
2001 SPECIAL PURPOSE LOCAL OPTION SALES TAX (SPLOST)

project
description
SPLOST funding

Grayson Branch Library
Development of a 20,000-sq.-ft. library with equipment, furnishings, and materials.
\$308,000

*Site of future
Grayson Branch Library*





• transportation

2001 SPECIAL PURPOSE LOCAL OPTION SALES TAX (SPLOST)

project

Bridges, Culverts, Drainage

description

Bridges, Culverts, Drainage Improvements consist of construction new or reconstruction existing bridges and culverts up to sufficiency standards.

SPLOST funding

\$ 15,048,744

*Bridge project over
Yellow River on
Five Forks – Trickum Road*



project

Cities Allocation

description

Allocation to the cities for road improvements.

SPLOST funding

\$10,000,000

*Oak Road realignment
at U.S. 78 (joint venture
with the City of Snellville)*



2001 SPECIAL PURPOSE LOCAL OPTION SALES TAX (SPLOST)

project

Intersection Improvements

description

Intersection Improvements include the addition of turn lanes, improvements of alignments of cross streets, improving sight distances, and signalizations.

SPLOST funding

\$30,553,952



Intersection improvements at U.S. 29 and Gloster Road

project

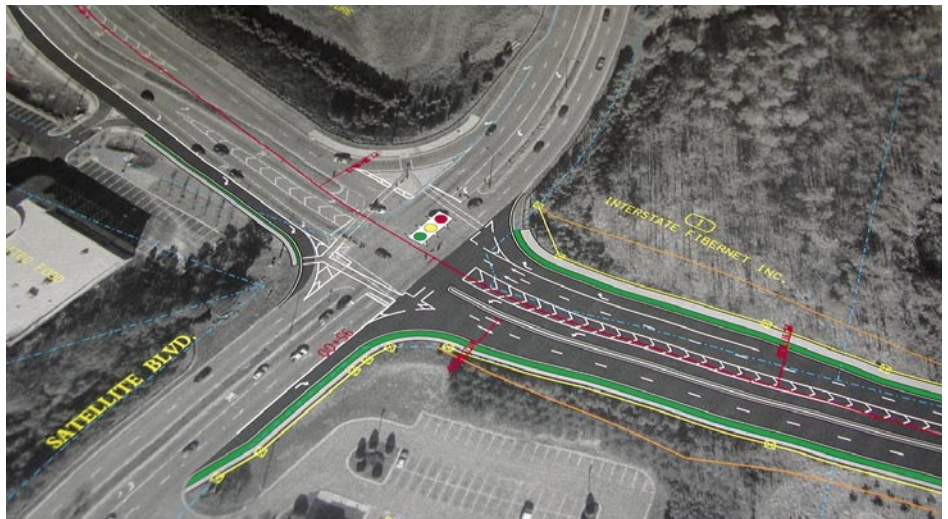
Major Roads

description

Major Roads include new road construction, new alignments, and increasing capacity of existing roads.

SPLOST funding

\$15,306,112



Future McGinnis Ferry extension

2001 SPECIAL PURPOSE LOCAL OPTION SALES TAX (SPLOST)

project

Neighborhood Speed Control

description

Under this program, neighborhoods can petition to have speed humps installed within their subdivisions.

SPLOST funding

\$757,536

Neighborhood speed control project in McKendree Park and River Colony subdivisions



project

Pedestrian Safety and Sidewalks

description

Pedestrian Safety and Sidewalks includes projects to link existing sidewalk segments or link residential areas to nearby activity centers.

SPLOST funding

\$ 22,794,064

Pedestrian safety project on Camp Perrin Road from Collins Hill Road to Azalea Drive



project

Planning

description

This category funds necessary studies for updating the key elements of the Comprehensive Transportation Plan.

SPLOST funding

\$1,515,072



project

Rehabilitation and Resurfacing

description

The Rehabilitation and Resurfacing program renovates, rehabilitates and resurfaces existing county roads to prolong the life of the road.

SPLOST funding

\$20,822,528



Hosea Road and Pittard Road were resurfaced

2001 SPECIAL PURPOSE LOCAL OPTION SALES TAX (SPLOST)

project

Road Safety and Alignments

description

Road Safety and Alignments projects correct safety deficiencies such as sight distances, horizontal and vertical alignments, and at-grade railroad crossings.

SPLOST funding

\$34,263,936

Safety and alignment project at Burns Road and Jackson Mill



project

School Safety

description

School Safety projects improve traffic safety near schools by installing turn lanes at school entrances, installation of sidewalks and signalization improvements.

SPLOST funding

\$27,581,072

School safety improvements at Peachtree Ridge High School



2001 SPECIAL PURPOSE LOCAL OPTION SALES TAX (SPLOST)

project

Unpaved Roads

description

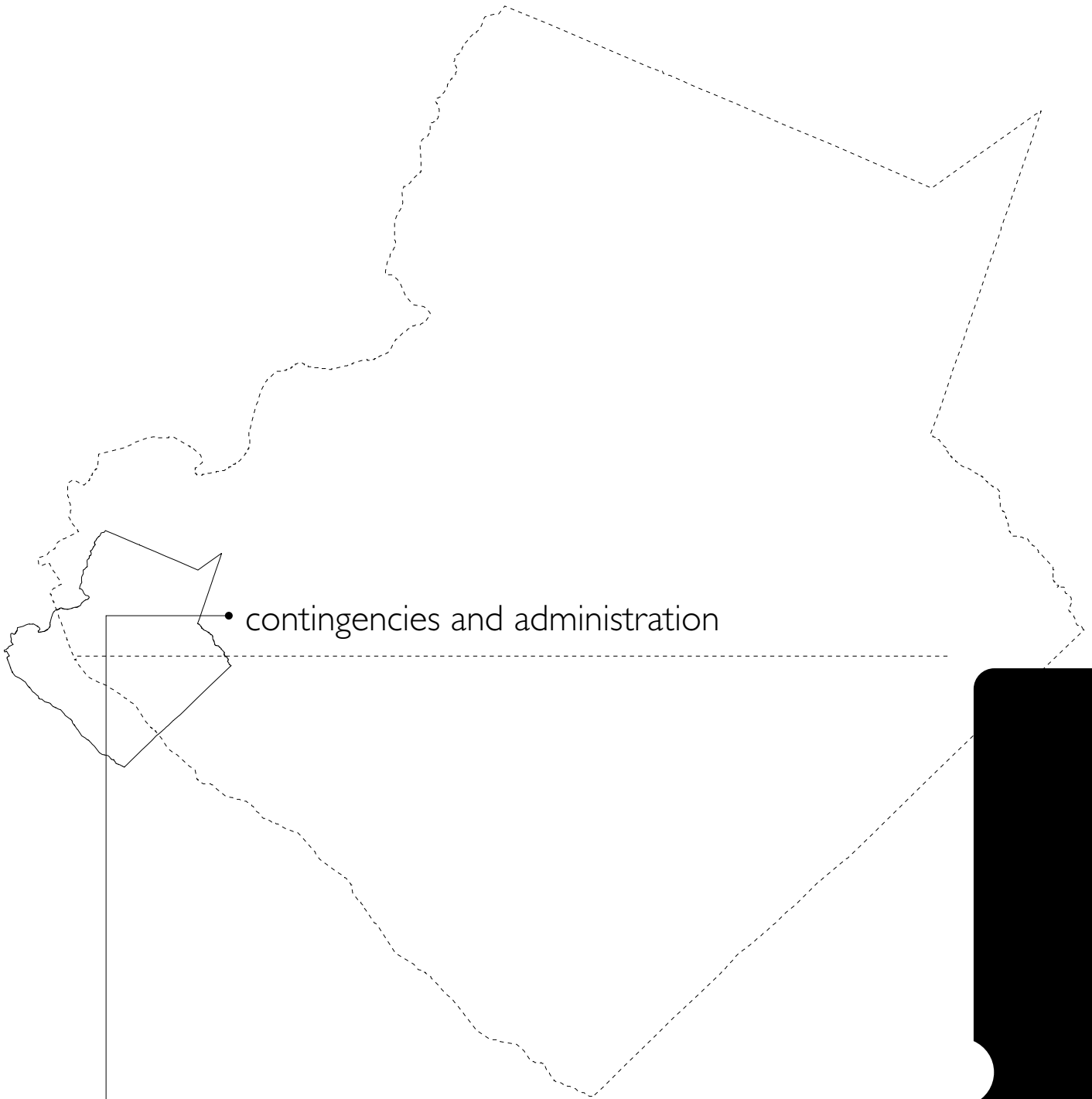
The Unpaved Road Program funds the paving of gravel and dirt roads throughout the county.

SPLOST funding

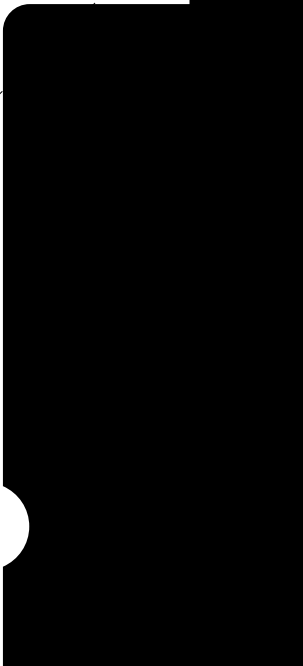
\$8,565,984



Paving project on Tullis Road



• contingencies and administration



2001 SPECIAL PURPOSE LOCAL OPTION SALES TAX (SPLOST)

project	Parks and Recreation In-House Program Administration
SPLOST funding	\$1,146,000
.....	
project	Parks and Recreation Program Contingency
SPLOST funding	\$813,435
.....	
project	Transportation Program Management
SPLOST funding	\$5,166,000
.....	